

SAILING INSTRUCTIONS

TRIANGULAR SERIES 2023

THE DON MANNING TROPHY

1. RACE STARTING TIME AND WIND CONDITIONS

Start times are listed in the Notice of Race.

- 1.1 Racing for the day will be postponed to the resail date or abandoned (if the race is on the resail date or the resail date has already been used) if a Gale Force or higher warning as issued by the Bureau of Meteorology is still current on the morning the race is scheduled.
- 1.2 The decision to start a race is generally at the discretion of the Committee boat captain. However, racing will not commence if the winds are greater than 23 knots average wind strength 10 minutes before the warning signal.

2. RULES

This race will be governed by the current Australian Sailing Racing Rules of Sailing and Safety Regulations of Australian Sailing (AS) (Except as altered by these sailing instructions).

The Organising Authority is Cowes Yacht Club Inc, Newhaven Yacht Squadron Inc. and Rhyll Yacht Club Inc. The Race Committee for each race shall be appointed by the Organising Authority, as follows:

- Race 1 – The Yacht Club nominated for the TY/Keel/Multi Westernport Challenge.
- Race 2 – Newhaven Yacht Squadron
- Race 3 – Rhyll Yacht Club

Each of the three Clubs should nominate a Contact Person from their Club and provide that person's name and contact details to the Clubs.

The Committee boat for the start of Race 1 and Race 2 of the Triangular Series races will be the Cowes Yacht Club Patrol Boat CK11. The Committee boat for the start of Race 3 will be a Newhaven Yacht Squadron Patrol Boat. The designated Boat Captain for each race will be the Race Officer for that race, irrespective of which Club's Race Committee is running the race.

The Boat Captain will have complete discretion as to whether or not to start the race and to decide on the appropriate course, except where specified in 1.1 or 1.2 above.

In relation to making a decision whether or not to abandon a race once commenced or to shorten course, the Boat Captain should attempt to contact the Officer of the Day. However, in the event that the Boat Captain is:

- unable to contact the Officer of the Day for any reason, or
- consults with the Officer of the Day and does not agree with their view,

the Boat Captain shall have complete discretion to make a decision whether or not to abandon a race or shorten course.

3. NOTICE TO COMPETITORS

Notice to Competitors, if required, shall be relayed via VHF radio channel 73 at least one hour before the advertised start time.

4. CHANGES TO SAILING INSTRUCTIONS

Any changes to the sailing instructions shall be advised by VHF radio on channel 73 at least one hour before the advertised start time. The Committee boat shall fly code flag L up to the warning signal.

5. SAFETY REGULATIONS

The Australian Sailing (AS) Special Regulations Part 1, Sections 1 – 5, Category 6 shall apply with the following inclusions: (Below is a heading summary only, refer to the full wording of the referenced AS Special Regulations Part 1)

- 3.07.4 Removable hatches to have locks and lanyards
- 3.24.3 Engine, permanently installed or outboard
- 3.24.4 Outboard motors for trailable boats, to be mounted at all times
- 3.24.5(a) Engine to provide minimum speed into 12 knot headwind
- 3.24.5(c) Sufficient fuel for 1 hour of motoring at minimum speed
- 3.25 Marine VHF radios shall be carried, which may be permanently installed or be waterproof handheld and must be capable of operating on channels 12, 15, 16, 17, 67, 69, 71, 72 and 73 (27Mhz or HF only are NOT permitted)
- 4.21.1 Lifebuoy or other approved device with drogue (no light for daylight race)
- 4.23.1 Heaving line accessible to cockpit

Entrants shall declare their intention to start by “signing on” by radio no later than 20 minutes prior to the start. This must be done by VHF radio, verbal sign on is not permitted.

All boats to state: Boat Name, POB (number of persons on board) and Sail Number.

Note: Finish or retirement is to be declared in a similar manner and is mandatory.

Failure to sign on by radio will be considered a DNS without reference to a protest.

All boats should report to the relevant Race Committee any observed significant circumstances that may adversely affect the safety of any of the competitors in the race.

Boats shall report to the relevant Race Committee all incidents that have resulted in injury or serious damage or are of an adverse nature that could affect the safety of the boat or crew while racing. Boats involved in the incident shall lodge with the relevant Race Committee an Incident Declaration at the first reasonable opportunity.

IMPORTANT: Mandatory for all yachts to maintain a radio watch for the duration of the race and any additional safety requirements for individual clubs must be met. The rescue procedures of the organizing clubs place a high reliance on competitors being able to render assistance to those in trouble. Entrants are advised that spot checks on category compliance may be made.

Port Rule 62B for Victorian Proclaimed Ports, including the waters of Western Port, requires small vessels IN ALL CIRCUMSTANCES to keep clear of Commercial shipping. Boats found to have contravened this Rule will be subject to disqualification.

6. STARTING

The starting line will be between a staff displaying the relevant code flag specified below on the Committee boat and the start mark orange flag in the Western Port area in the vicinity of Rhyll Yacht Club for Race 2 &

Newhaven Yacht Squadron for Race 3, except for Course 3 where the start line may be relocated.

Code flag numeral pennants 1, 2 or 3 will be used as a single class flag start. The numeral pennant 1, 2 or 3 will also signal the course number to be used. Course 1 signaled by numeral pennant 1, Course 2 signaled by numeral pennant 2, Course 3 signaled by numeral pennant 3.

All races using Courses 1 or 2 include a short beat to windward prior to sailing the course as listed in these Sailing Instructions. The rounding side of this windward mark (an orange or yellow buoy) shall be declared by the raising of a red (Port) or green (Starboard) flag on the committee boat masthead.

Course 3 start location may be relocated to an area that has more favourable conditions. In this case the Committee boat will fly Code Flag L with one sound signal as a 'follow this boat' to the new starting location. This change of start area will also be announced on VHF Channel 73.

Each race will be started in accordance with Rule 26 with the warning signal made 5 minutes before the starting signal.

7 COURSES

The course number for each race will be signaled as follows: The course flag: Numeral 1 for course 1, Numeral 2 for course 2 or Numeral 3 for course 3 will also be the class flag flown as the 5 minute warning signal. The course number will also be announced on Ch 73 by the Race Committee boat before the warning signal.

Please Note: All boats must comply with the Parks Victoria 5 knot speed limits. Please refer to the Parks Victoria website (<https://www.parks.vic.gov.au/-/media/project/pv/main/parks/documents/plans-and-projects/boating-zone-review/boating-swimming-zones-brochure.pdf?la=en&hash=1B3C9080A84902F8155D7C3D9FD802B5AD7F6E97>) for details of the restricted zones and signage. All racing marks are outside these zones.

Race 1

See the Westernport Challenge Ty/Keel/Multi Sailing Instructions

(<https://www.cowesyachtclub.com/sailing/western-port-challenge/#TY>)

Race 2 Rhyll to Newhaven

Course 1– Length approx. 14nm

- Start
- Windward Mark (rounding side signaled as per SI from the Committee boat for this rounding only)
- Loelia Shoal East Cardinal to starboard (Newhaven YS D)
- Newhaven Top Light to starboard (Newhaven YS A)
- Churchill Island Buoy to starboard (Newhaven YS Buoy B)
- Newhaven Buoy C to starboard
- Newhaven Top Light to starboard (Newhaven YS A)
- Finish Line - A line between the Newhaven Channel light (green) and the North East corner of the Newhaven Yacht Squadron clubhouse.

Course 2 – Length approx. 18nm

- Start
- Windward Mark (rounding side signaled as per SI from the Committee boat for this rounding only)
- Newhaven Buoy C to port
- Reef Island West Cardinal to starboard
- Elizabeth Island Hydrology to port (Newhaven YS F)
- Newhaven Top Light to starboard (Newhaven YS A)
- Finish Line - A line between the Newhaven Channel light (green) and the North East corner of the Newhaven Yacht Squadron clubhouse.

Course 3 – Length approx. 11 nm

All marks are to be rounded to Port.

- Start
- Windward
- Leeward
- Windward
- Leeward
- Windward
- Leeward
- Finish between Course 3 Finish Mark and a staff displaying the numeral pennant 3 on the Committee boat

Race 3 Newhaven to Rhyll

Course 1 – Length approx. 13nm

- Start
- Windward Mark (rounding side signaled as per SI from the Committee boat for this rounding only)
- Elizabeth Island Hydrology to starboard (Newhaven YS F)
- Churchill Island Buoy to starboard (Newhaven YS Buoy B)
- Rhyll North Cardinal to port
- Finish Line – A line between the Rhyll Channel Mark (red) and the North East corner of the Rhyll Yacht Clubhouse.

Course 2 – Length approx. 15nm

- Start
- Windward Mark (rounding side signaled as per SI from the Committee boat for this rounding only)
- Churchill Island Buoy to port (Newhaven YS Buoy B)
- Elizabeth Island Hydrology to port (Newhaven YS F)
- Finish Line – A line between the Rhyll Channel Mark (red) and the North East corner of the Rhyll Yacht Clubhouse.

Course 3 – Length approx. 11 nm

All marks are to be rounded to Port.

- Start
- Windward
- Leeward
- Windward
- Leeward
- Windward
- Leeward
- Finish between Course 3 Finish Mark and a staff displaying the numeral pennant 3 on the Committee boat

8 SHORTENING OF COURSE

A shorten course will be signaled with code flag “S” flown from the host Committee Boat and on VHF Ch 73. The lead boat will then proceed directly to the next mark for a finish or as notified by VHF radio. All other boats must follow the lead boat completed correct course to finish. This changes Rule 32.2

9 TIME LIMIT

The first boat must finish within 5.0 hours for the race to be valid. All other yachts must finish no later than 1.5 hours after the first boat. Boats that do not make the time limit will be classified as a DNF. (see Westernport Challenge Sailing instructions for Race 1 time limit)

10 PROTESTS

Protests shall be in writing and shall be lodged with the relevant Race Committee for the particular race within one hour of the last boat finishing. The Boating Officer and/or Rear Commodore of each club are members of the protest committee, or their deputies.

The protest committee will hear protests approximately in the order of receipt and as soon as practicable.

11 ALTERNATIVE PENALTIES

The 720 degree turn penalty, in accordance with Racing Rules (rule 44.1, 44.2) will apply.

12 RADIO COMMUNICATIONS

Radio communications will be conducted on **VHF Marine VHF channel 73**. All yachts should maintain a listening watch on VHF channel 73 during the race. Sign on and sign off is mandatory.

Race	Sign On	Sign Off
Race 1	See the WPC/TY/Keel Sailing Instructions.	See the WPC/TY/Keel Sailing Instructions.
Race 2	Sign on with Cowes Yacht Club CK11	Sign off with Newhaven Yacht Squadron when finished on NH11 or VJ3ND
Race 3	Sign on with Newhaven Yacht Squadron on NH11 or VJ3ND	Sign off with Rhyll Yacht Club when finished on RH1.

13 SCORES

To include as many boats as possible, each Club team will be governed by the smallest club team for each race minus one boat: e.g. if the smallest club team has four starters, each team score will be based on 3 best performances. Minimum team number shall be 3 boats with all 3 boats to count in this minimum number case.

The “low points scoring system” shall apply. The handicap calculations will be based on the CBH system, but using the CBH ratings from previous years races. This is because Australian Sailing has published a revised set of CBH ratings, however many of the competing boats do not have a CBH assigned yet under the new system, which covers only Monohull Trailable yachts.

14 DISCLAIMER OF LIABILITY

Competitors participate in the Triangular Series entirely at their own risk. See RRS 4, Decision to Race. which states: “The responsibility for a boat’s decision to participate in a race or to continue racing is hers alone.”

The Organizing Authority will not accept any liability for material damage or personal injury or death sustained in conjunction with or prior to, during, or after the series.

Competitors’ attention is also drawn to:

Fundamental Rule 3 – Acceptance of the Rules:

By participating in a race conducted under these racing rules, each competitor and boat owner agrees:

- “(a) to be governed by the rules;
- (b) to accept the penalties imposed and other action taken under the rules, subject to appeal and

review procedures provided in them, as the final determination of any matter arising under the rules; and

- (c) with respect to any such determination, not to resort to any court of law or tribunal.

15 INSURANCE

All competitors are required to have personally, or through their boats, Third Party Liability Insurance to a minimum of \$10,000,000 and adequate racing insurance.

16 RESULTS

Triangular Series race results will be posted on the Cowes Yacht Club website. www.cowesyachtclub.com under the Sailing Events - race results tab.

TRIANGULAR SERIES 2020

APPROXIMATE COURSE DIAGRAMS - ADDENDUM A

Note: All course Diagrams are an approximate representation and are NOT to be used as the course description; please refer to section 7 for the Course Description.

Race 1. TY/Keel/Multi Westernport Challenge.

See TY/Keel/Multi Westernport Challenge Sailing Instructions.

Race 2. Rhyll – NEWHAVEN

Course 1

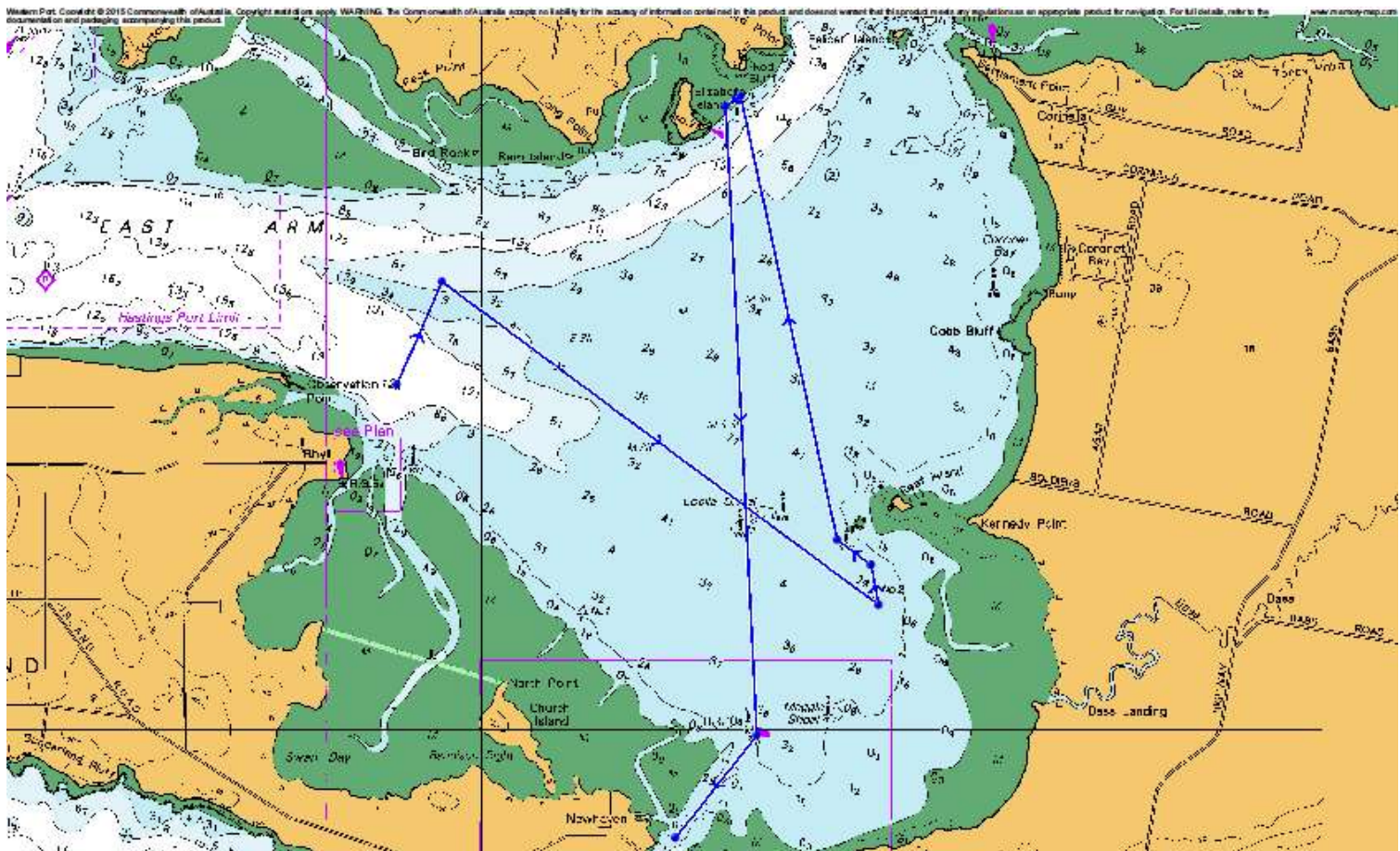
- Start
- Windward Mark (rounding side signaled as per SI from the Committee boat for this rounding only)
- Loelia Shoal East Cardinal to starboard (Newhaven YS D)
- Newhaven Top Light to starboard (Newhaven YS A)
- Churchill Island Buoy to starboard (Newhaven YS Buoy B)
- Newhaven Buoy C to starboard
- Newhaven Top Light to starboard (Newhaven YS A)
- Finish Line-A line between the Newhaven Channel light (green) and the North East corner of the Newhaven Yacht Squadron clubhouse.



Race 2. Rhyll – NEWHAVEN

Course 2

- Start
- Windward Mark (rounding side signaled as per SI from the Committee boat for this rounding only)
- Newhaven Buoy C to port
- Reef Island West Cardinal to starboard
- Elizabeth Island Hydrology to port (Newhaven YS F)
- Newhaven Top Light to starboard (Newhaven YS A)
- Finish Line-A line between the Newhaven Channel light (green) and the North East corner of the Newhaven Yacht Squadron clubhouse.



Race 3. Newhaven – Rhyll

The diagrams for Race 2 can serve as guidance for Race 3 marks, the courses are in Section 7 above.

All Races

Course 3

All marks are to be rounded to Port.

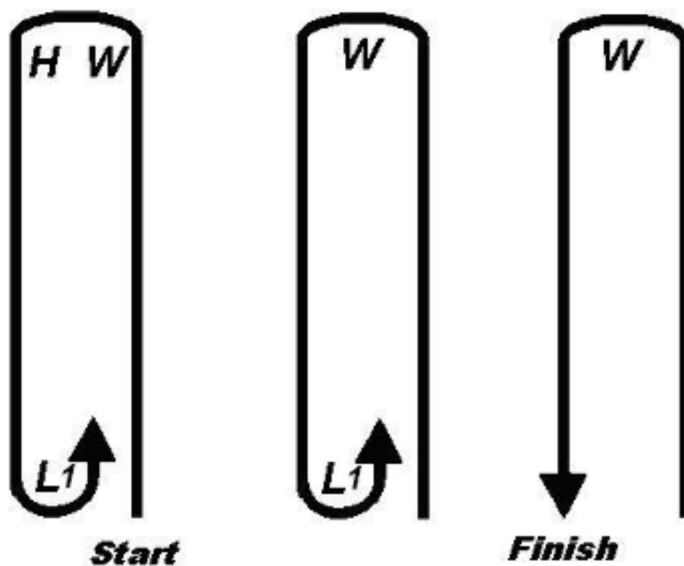
- Start
- Windward
- Leeward
- Windward
- Leeward
- Windward
- Leeward
- Finish between Course 3 Finish Mark and a staff displaying the numeral pennant 3 on the Committee boat

For the purposes of this diagram:

W – means Windward Mark

L1 – means Leeward Mark

H – means Hitch Mark



TRIANGULAR SERIES 2020

Approximate Mark Locations - ADDENDUM B

Mark	Approximate Location
Race 1 Start	Orange or Yellow inflatable laid mark north of Rhyll inlet
Race 2 Start	Buoys as nominated by Newhaven Yacht Squadron
Windward rounding mark (Courses 1 and 2)	Orange or Yellow inflatable laid mark approx. 1000m upwind from the start line
Windward mark (Course 3)	Yellow inflatable laid mark to Windward of the start line
Hitch mark (Course 3)	Orange inflatable laid mark
Leeward mark (Course 3)	Yellow inflatable laid mark.
Finish	As described for each course
Finish Mark for Course 3	Purple inflatable laid mark
Ch Buoy 13	S38 25.997 E145 13.348
Ch Buoy 11	S38 26.703 E145 11.543
Ch Buoy 17	S38 24.286 E145 15.185
Ch Buoy 19	S38 23.117 E145 14.793
Tortoise Head West Cardinal Mark (THB)	S38 25.584 E145 15.154
Loelia East Cardinal Mark D	S38 28.210 E145 23.151
Churchill Island Buoy B	S38 29.055 E145 21.050
Rhyll North Cardinal	S38 27.830 E145 19.292
Elizabeth Island Hydrology Pile F	S38 24.976 E145 22.667
Newhaven YS Buoy C	S38 28.897 E145 24.089
Newhaven Top Light Mark A	S38.29.947 E145 22.780
Newhaven Channel Light (Green)	S38.30.703 E145 22.255
Reef Island West Cardinal	S38.28.468 E145.28.818
CYC Buoy	Purple inflatable laid mark approx. 750m North East of Cowes Yacht Club